

CERTIFICATE
БИ ПС



БИАТЛОН-7-3 БИАТЛОН-7-4

“БИАТЛОН” TARGET RIFLES

“Б И А Т Л О Н”
TARGET RIFLES
“БИАТЛОН-7-3” “БИАТЛОН-7-4”

CERTIFICATE

For main technical data of the rifle refer to the "Service Manual" БИ РЭ.

Warning! For your safety and the safety of others read and understand the "Service Manual" БИ РЭ, attached to every rifle, prior to servicing the rifle.

1 Standard equipment

The complete set of the "Биатлон" rifles is in compliance with Table 1.

Table 1

Designation	Denomination	Quantity, pcs**
1	2	3
БИ-7-3.С60__*	«Биатлон-7-3» rifle (without magazine)	
БИ-7-4.С60__*	«Биатлон-7-4» rifle (without magazine)	
REPLACEMENT PARTS		
БИ-7-2.0-14-01	Diopter (marked 12)	
-03	Diopter (marked 14)	
-04	Diopter (marked 16)	
БИ-7-3.0-16-01	Diopter (marked 12)	
-03	Diopter (marked 14)	
-04	Diopter (marked 16)	
БИ-7-2.0-15	Blind	
БИ-7-4.0-1	Circular front sight (marked 24)	
-02	Circular front sight (marked 28)	
-03	Circular front sight (marked 30)	
-04	Circular front sight (marked 32)	
-05	Circular front sight (marked 34)	
БИ-6.С66	Magazine	
БИ-7-2.С68	Magazine with cover for three rounds	

Table 1, continuation

1	2	3
TOOLS AND ACCESSORIES		
МСЮ-2.С61	Screwdriver handle	1
МСЮ-2.С62	Blade assembly	1
-01	Blade assembly	1
МСЮ-2.С64-02	Cleaning rod	1
БИЮ-1.С63	Rifle-sling loop	1
БИЮ-1.С64	Rifle sling	1
БИЮ-1.С66	Shoulder strap	1
СОК-Ю-5.С63	Oiler	1
	Drift 3-2.0	1
	Drift 3-3.0	1
	Bristle brush Щ-2-5.6	2
	Pull-through 5.6	2
STOWAGE MEANS		
УПМ.С6	Container assembly	1
БИЮ-1.С67	Slip for "Биатлон" rifle	1
OPERATION DOCUMENTS		
БИ. РЭ	Service Manual	1
БИ. ПС	Certificate	1
PACKAGE		
УК-2.1-1-02	Carton box	1

Notes: 1 When packing, the sight is detached from the rifle and packed in carton box separately.

2 The "Quantity" column is to be filled in while completing the rifle in accordance with the order

2 Acceptance certificate



МЖОЗ

"Биатлон-7" target rifle
version _____ No _____
is manufactured, accepted, preserved and packed in accordance with the
requirements of the State Standards, Technical Documentation in force and
found fit for service. It is accompanied with Certificate of Conformity:

No РОСС RU.МЖОЗ. _____ of _____
effective period beginning _____

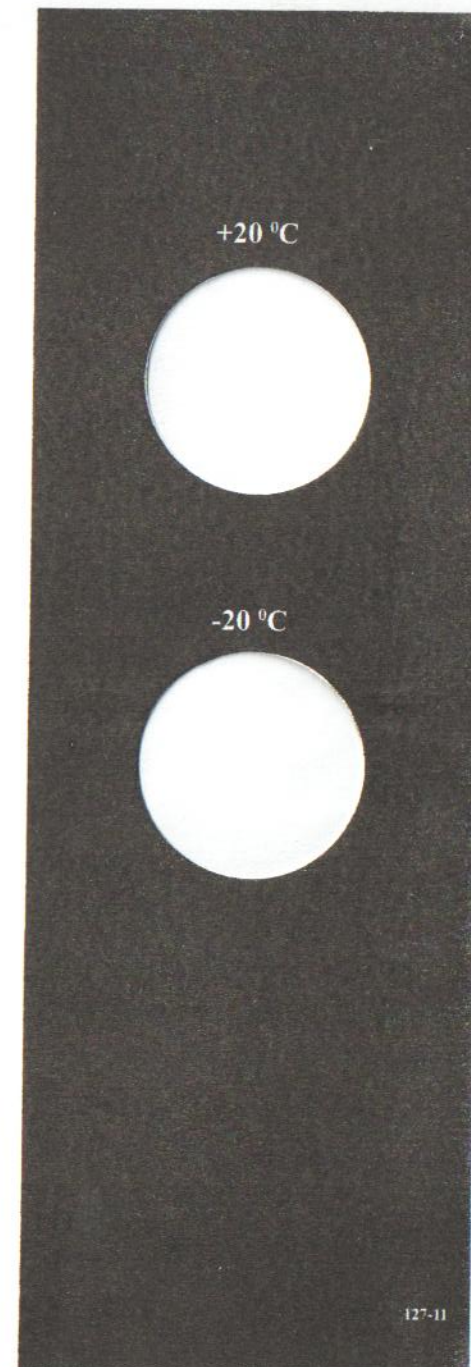
The rifle is zeroed with the diopter position:
horizontal – on alignment mark, drum scale division _____,
vertical – on alignment mark, sight-base scale division _____
drum scale division _____.

The rifle is proved when firing from the bench position at a 50m range at
registration fire card in enclosed range.

Temperature at which the rifle has been tested	Description and lot of cartridges	Spreads of impacts, mm			
		П1	П2	П3	П4
plus $(20 \pm 8)^{\circ} \text{C}$					
minus $(20 \pm 2)^{\circ} \text{C}$					

QID chief _____
personal stamp

Seal _____
day, month, year



Паспорт "Биатлон" на английском языке

127-11

SERVICE MANUAL
БИ РЭ



БИАТЛОН-7-3 БИАТЛОН-7-4

“БИАТЛОН” TARGET RIFLES

CONTENTS

Introduction.....	3
1 Description and Operation.....	4
1.1 Purpose.....	4
1.2 Specifications.....	5
1.3 Design and Principle of Operation.....	5
1.4 Marking.....	6
2 Usage for Its Designated Purpose.....	7
2.1 General Directions.....	7
2.2 Safety Precautions.....	7
2.3 Preparing for Use.....	8
2.4 Operation Procedure.....	12
3 Maintenance.....	13
3.1 In-service Maintenance.....	13
3.2 Maintenance during Long-term Storage.....	15
4 Storage.....	16
5 Transportation.....	1
Appendix A. List of Rifle Components.....	17

The Service Manual (hereinafter referred to as the SM) of the "Биатлон" target rifle (hereinafter referred to as the rifle) contains description of the rifle design, principle of operation and other information necessary for its proper and safe servicing.

**WARNING! FOR YOUR SAFETY AND THE SAFETY OF OTHERS
READ AND UNDERSTAND THE PRESENT SERVICE
MANUAL BEFORE USING THE RIFLE! PAY SPECIAL
ATTENTION TO THE SAFETY PRECAUTIONS!**

The present SM covers the "Биатлон-7-3", "Биатлон-7-4" (to be read "Biathlon-7-3", "Biathlon-7-4") rifles and their versions.

The range of versions and with their characteristic features is given in Table 1.

Given in the Appendix A is the List of rifle components and their description. While ordering certain component, indicate its item number, description and version, specified in the Certificate (БИ ПС).

The rifle design is constantly improved, therefore some minor changes in the rifle design may be not introduced in the SM.

The rifle design ensures safe operation provided that the requirements laid down in the SM are met.

Table 1

Version designation	Description	Version characteristic feature
БИ-7-3.С60	"Биатлон-7-3" target rifle	With safety
-01		For left-hander
-04		With safety, for left-hander
-05		On order of the "Larsen-Biathlon" Company
-11		On order of the "Larsen-Biathlon" Company, for left-hander
-12		
БИ-7-4.С60	"Биатлон-7-4" target rifle	With safety
-01		For left-hander
-04		With safety, for left-hander
-05		Improved stock
-08		Improved operating characteristics
-10		

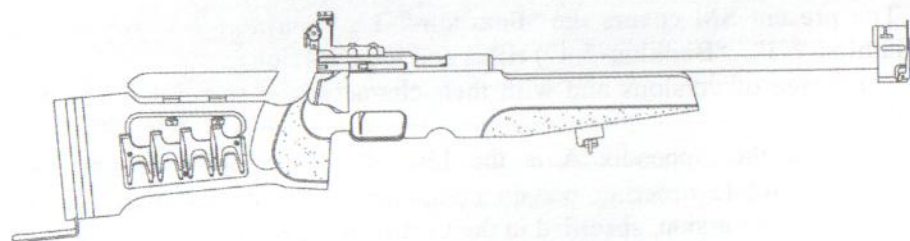
1 DESCRIPTION AND OPERATION

1.1 Purpose

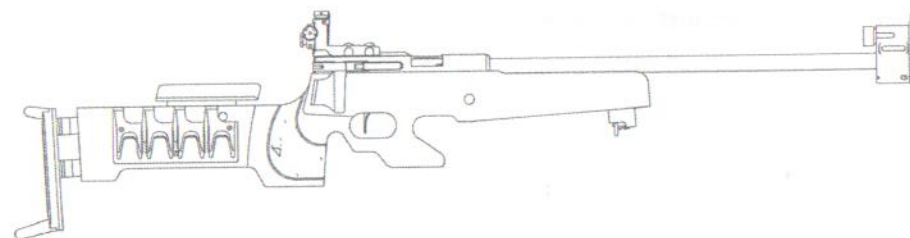
The "Биатлон-7-3" (БИ-7-3), "Биатлон-7-4" (БИ-7-4) target rifles and their versions are designed for biathlon shooting at 50m range.

The "Биатлон-7-3" target rifle is preferred for women and juniors, while the "Биатлон-7-4" – for men.

General view of rifles is depicted in Figure 1.



"Биатлон-7-3" and "Биатлон-7-4" target rifles



"Биатлон-7-4" target rifle with improved stock

Figure 1 - "Биатлон" target rifles

1.2 Specifications

Table 2

Parameter	БИ-7-3	БИ-7-4
Caliber, mm	5.6 (.22LR)	
Shift of mean point of impact (MPI) while turning the sight knob through one scale division, mm, max	3.0	
Trigger pull, adjustable, N (kgf)	4.9 to 9.8 (0.5 to 1.0)	
Length of trigger travel, adjustable, mm	2 to 4	
Magazine capacity, pcs, rounds	5	
Value of cheek piece adjustment, mm, horizontal	6	6
vertical	7.5	7.5
Overall dimensions, mm, max		
length	1085	1100
width	90	
height	290	
Weight of rifle (w/o slings and accessories), kg, max	4	4.5

1.3 Design and Principle of Operation

1.3.1 The "Биатлон" rifle consists of the following assembly units:

- barrel with receiver;
- locking mechanism;
- trigger mechanism;
- stock assembly;
- magazines;
- sight;
- slings.

The barrel with receiver and front-sight base is a one-piece unit.

Atop the receiver is a rail for sight mounting.

The front-sight base houses the circular front sight.

The barrel bore is locked by the hinged-lever mechanism, which makes together with a bolt a slider-crank mechanism with vertical axes of rotation.

The trigger mechanism provides for adjustment of trigger pull, trigger release ("smooth" or "with warning") and trigger travel.

The rifle magazines are single-column, five-round and interchangeable.

The sight assembly is a dioptrical quick-detachable sight. It is attached to the receiver with the aid of the clamp nuts. It allows to introduce fine corrections in the firing by turning of the horizontal and vertical adjusting knobs. The sight is equipped with a snow cover.

Adjustment of dioptrical sight relative to an eye is performed by its moving along the rail, found on the receiver.

The rifle is completed with a blind, changeable diopters and circular front sights of different size.

The rifle is fitted in the stock on special plastics.

The stock design provides for adjustment of cheek piece in vertical and horizontal planes and adjustment of butt length as well.

The stock is provided with a swivel to fasten the ends of the carrying sling and a stock magazine holder.

The fore end is provided with a swivel base for fastening the shoulder sling and a swivel plate for fastening the sling swivel.

The butt plates of the БИ-7-3.С60-11, БИ-7-3.С60-12, БИ-7-4.С60-08 and БИ-7-4.С60-10 versions feature upper and lower hooks independently adjusted in height.

1.3.2 Principle of operation:

- on the bolt moving to the rear the hammer gets cocked and the mainspring becomes compressed;

- on the bolt moving forward a cartridge is stripped from the magazine and fed into the chamber and the barrel bore is locked by the locking mechanism;

- while pressing the trigger the hammer disengages from the release lever and strikes the firing pin under action of the mainspring. The firing pin strikes against the cartridge rim and pierces the primer. A shot is fired;

- on further bolt moving to the rear the empty case is ejected from the chamber by the extractor and extracted beyond the receiver on its contact with the ejector. The hammer compresses the mainspring and gets cocked.

1.4 Marking

1.4.1 Marked on the rifle receiver are: the rifle description, information on the Manufacturing plant, rifle serial number as well as the following special signs and symbols:



- sign of product conformity to the requirements of the State certification system and code of Agency for certification of civilian and service weapon;



- stamp of the Test Station (Izhevsk, Russia), acknowledged by the Permanent International Committee for testing the hand firearm (CIP) and two last digits of year of certification tests;

5.6 .22LR - designation of used cartridge.

2 USAGE FOR ITS DESIGNATED PURPOSE

2.1 General Directions

2.1.1 Please read and understand the present SM and study the rifle design prior to servicing the rifle. Pay special attention to the safety precautions and operation procedure of the quick-reloaded rifle.

2.1.2 To fire the rifle use the 5.6mm (.22LR) rim-fire cartridges accompanied with the Certificate of Conformity in force.

At shooting in the open shooting gallery at air temperature below 268 K (minus 5 °C) use the "Biathlon" cartridges for particular weather conditions. Prior to shooting keep the cartridges and rifle in the open air for an hour, as minimum.

When exposing the rifle prevent the barrel bore and magazines with cartridges from entry of snow.

2.1.3 To protect the firing pin from breakage make dry releases only with the magazine detached.

2.1.4 Prior to using the rifle degrease it, i.e. unpack the rifle, accessories and tools, remove protective grease, check the set of delivered equipment and make sure that the rifle is serviceable as per item 2.3.

After the rifle has been degreased incinerate anticorrosive paper, as it is toxic.

2.2 Safety Precautions

2.2.1 The rifle design ensures the rifle safe operation provided the rifle is used properly and the cartridges, specified in the "General Directions" Section, are used for firing.

2.2.2 To ensure safety in handling the rifle, adhere to the following safety rules:

- always handle the rifle as if it is loaded;
- never point the rifle at anyone. Never use it as a stick;
- bear in mind that a bullet flight is 1.5 km;
- never use the hand-loaded cartridges or cartridges of unknown brands, because of a "hang fire" as well as defective cartridges or cartridges with expired period of storage, defective cartridges and those with traces of corrosion;

- when annular bulging or cracks appear on the cartridge case body at the flange base, stop using the rifle to prevent possibility of powder gases blow-out;
- insert the magazine with cartridges into the rifle only on the firing line;
- inspect the barrel bore and chamber prior to loading the rifle and going to the start line. They should be clean and free from any obstruction. Firing the rifle with a dirty barrel bore may cause its damage and impair accuracy of fire;
- after firing and prior to going to the ski track from the firing line, detach the magazine and unload the rifle, make sure that the chamber is empty;
- to reload the rifle energetically move the bolt back and forth (with no stops in intermediate positions);
- in case of misfire do not unload the rifle within 30 s as a "hang fire" may be. After unloading the rifle, make sure that there is no bullet in the chamber;
- keep the rifle in stowed position with safety engaged (in the "safe" position) to avoid an accidental discharge;
- store the rifle and cartridges separately beyond the reach of children and untrained individuals;
- keep record of fired shots.

2.3 Preparing for Use

2.3.1 Prior to using the rifle:

- check to make sure that there is no corrosion on the rifle metal components and that the coating is intact (in case the Manufacturer's preservation is disturbed);
- check the rifle set of delivered equipment;
- field strip the rifle according to item 3.1.1 and degrease the components surfaces;
- check operation of the safety (if available);
- check that the auxiliary extractor and extractor are accurately returned to the initial position under action of springs;
- check that the firing pin moves inside the bolt by light shaking. If case of firing pin sticking disassemble the bolt according to item 3.1.3 and clean it;
- check to make sure that magazines inserted into the rifle in turn are reliably held by the latch;
- using a drift sink the follower of each magazine downward till the stop and check that it energetically returns to the lips after the drift has been removed;
- check to make sure that the front-sight base cap is precisely fixed in closed and open positions;
- check to make sure that there is a clearance between the fore end and barrel; to this end insert a sheet of paper into the clearance between them and move the sheet from the fore-end front portion to the receiver;

- insert an empty magazine into the rifle, reload the rifle and make sure that the lever stops and remains in front position. Press the trigger to hear that the hammer strikes against the bolt end.

2.3.2 For individual fitting of rifle to the user:

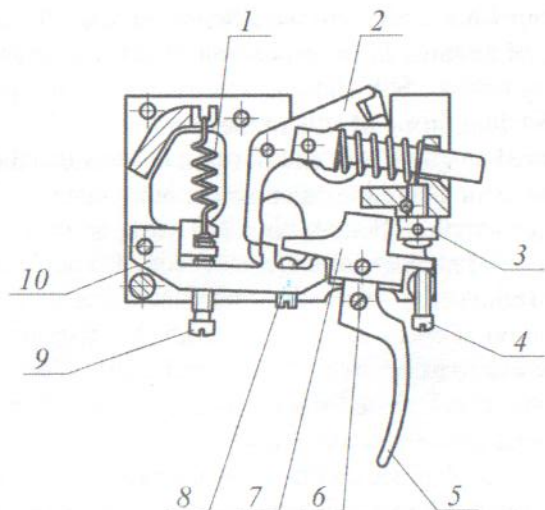
- adjust desired length of butt and position of hooks, to this end:
 - unscrew connecting screws, fastening the butt plate;
 - adjust desired length of butt via shims or washers;
 - adjust position of hooks;
 - screw in the connecting screws.
- adjust position of cheek piece, to this end:
 - unscrew the clamp nuts;
 - detach the butt cheek piece from the stock;
 - remove several washers or add ones;
 - place the butt cheek piece on the stock and fasten it with the clamp nuts;
 - moving the butt cheek piece lengthwise, adjust desired position of the cheek piece and tighten the clamp nuts.

To adjust position of the cheek piece of the БИ-7-4.C60-08 and БИ-7-4.C60-10 versions proceed as follows:

- loosen the screws, fastening the cheek piece to the post;
- detach the cheek piece with the post from the stock;
- loosen the wood screws, move the cheek piece and position it in desired location relative to the post, tighten the wood screws;
- attach the cheek piece with post to the stock;
- moving the cheek piece with post vertically position the cheek in desired location and tighten the screws.
- set the sight according to Your ready-to-fire position, to this end loosen the clamp nuts, move the sight to the desired position and tighten the nuts.
- screw in diopter from the set of delivered equipment into the sight. The diopter should be appropriate to the firing conditions. Put a blind onto diopter in case of necessity prior to its screwing into the sight;
- select required front sight and fasten it in the front-sight base, for this purpose unscrew the front-sight nut (or adapter) through four-five turns, place the selected front sight and screw in the front-sight nut (or adapter) by means of a drift;

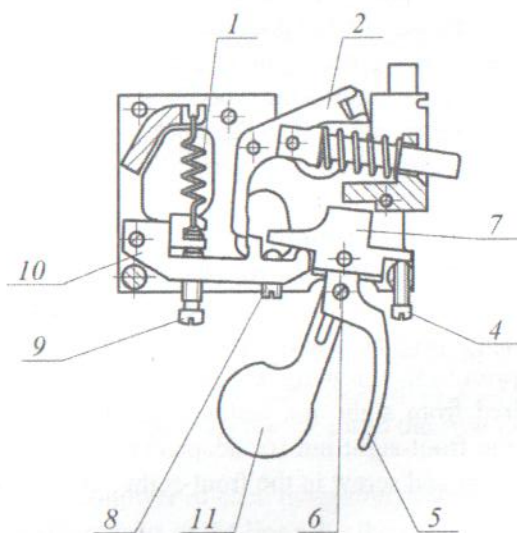
2.3.3 For individual adjustment of the trigger mechanism it is necessary to adjust the trigger position relative to the stock handle, trigger travel, trigger pull and trigger release.

The trigger mechanism without safety is in compliance with Figure 2 and the trigger mechanism with safety is in compliance with Figure 3.



1 – trigger lever spring; 2 – hammer; 3 – adjusting screw; 4 – screw; 5 – trigger; 6 – washer screw; 7 – trigger lever; 8 – second stage trigger adjustment screw; 9 – trigger pull screw; 10 – release lever

Figure 2 – Trigger mechanism without safety



1 – trigger lever spring; 2 – hammer; 4 – screw; 5 – trigger; 6 – washer screw; 7 – trigger lever; 8 – second stage trigger adjustment screw; 9 – trigger pull screw; 10 – release lever; 11 – safety

Figure 3 – Trigger mechanism with safety

Adjust the trigger mechanism with the stock detached.

After the trigger mechanism has been adjusted energetically reload the rifle several times and release the hammer. The hammer spontaneous releasing during the rifle reloading is impermissible.

a) To change position of the trigger it is necessary to:

- loosen washer screw 6;
- move trigger 5 to the desired position;
- tighten washer screw 6.

b) To adjust the “smooth” release, characterized by slight uniform increase of pull throughout the trigger travel, it is necessary to:

- adjust desired travel of trigger 5 by rotating screw 4;
- adjust desired trigger pull by rotating trigger pull screw 9.

Unscrew trigger pull screw 9 to increase the trigger pull. When trigger pull screw is unscrewed till the stop but the trigger pull is too light, screw in second-stage trigger adjustment screw 8 until it comes into contact with trigger lever 7, trigger pull increases significantly. Adjust the trigger travel in case of necessity.

c) To adjust release “with warning”, characterized by abrupt increase of pull at the end of the trigger travel, it is necessary to screw in or unscrew second stage trigger adjustment screw 8 so that it comes into contact with trigger lever 7 just before hammer 2 disengages from release lever 10.

Rotate adjusting screw 3 (for trigger mechanism w/o safety) to prevent the trigger from traveling after its disengagement.

Adjust desired travel of trigger 5 by screw 4 and adjust trigger pull by trigger pull screw 9.

2.3.4 For individual fitting of shoulder slings (if available) it is necessary to:

- insert the shoulder-sling pad hook into slot of the swivel base, located on the stock fore end;
- tighten the screw by means of screwdriver;
- give some turns to the wood screws, fastening the swivel on the butt;
- feed the slings' ends under the swivel and adjust desired length by their fixing on swivel projection. The sling length should provide convenient position of rifle on the user's back while skiing;
- tighten the wood screws.

2.3.5 For individual fitting of rifle sling (if available) it is necessary to:

- put the sling loop on the arm and mark place on the sleeve against the fastener;
- take the loop off the arm.

If the perimeter is changed, draw the limiter ring aside and replace the limiters to adjust the loop perimeter. When so doing it is possible to shorten the lim-

iter for the required length and set it in a proper place relative to the arm moving it together with the ring over the loop perimeter;

- separate unsewed strip of textile fastener on the loop and sew it in the marked place on the ski suit sleeve;

- put the sling loop on the arm;
- joint both strips of textile fastener;
- adjust position of sling swivel relative to the hand, to this end move the swivel along the stock fore end and fasten it by tightening of swivel cap by means of screwdriver;

- feed the rifle sling through the swivel ring and adjust the sling length.

2.3.6 After individual fitting has been completed lubricate the rifle as according to item 3.1.3.

Visually inspect the cartridges – they should be free from damages and corrosion. Load the magazines. Insert the loaded magazines in the holder seats.

The rifle is ready for shooting.

2.4 Operation Procedure

2.4.1 To load the rifle:

- open the covers protecting the barrel and diopter;
- disengage safety (if available), moving it to the utmost front position;
- remove the loaded magazine from the holder, insert it in the magazine well and force it up until the magazine is caught by the latch;
- move the bolt to the rear position and then move it forward.

When the rifle is loaded with one cartridge (the magazine in the rifle should be empty), move the bolt to the rear position, place the cartridge on the magazine guide surfaces or in the chamber and move the bolt forward.

The rifle is ready for shooting.

2.4.2 To make a shot, proceed as follows:

- prepare for shooting;
- aim;
- let the trigger off.

A shot is fired.

2.4.3 To reload the rifle, it is required to move the bolt to the rear position and then energetically move it forward without any stops.

The rifle is ready for the next shot.

2.4.4 To zero the rifle, proceed as follows:

- set diopter to the position, specified in the "Acceptance Certificate" Section, Certificate БИ ПС;
- shoot a group of shots at target No 7;
- determine the mean point of impact (MPI) of the said group of shots as a centre of circumference;

- if the MPI and the target center do not coincide, make corrections in the sight setting.

Introduce corrections until the MPI of the group of shots coincides with center of target.

2.4.5 To unload the rifle:

- press the magazine latch and withdraw the magazine;
- move the bolt rearward.

After shooting has been over, prior to going on the ski-track lock the bolt, engage the safety (if available) and put covers on barrel and sight.

Accidental entry of snow or moisture into barrel bore may cause deviation of the first shot in a group of shots and sometimes may cause bulging of barrel, resulted in significant worsening of firing characteristics.

2.4.6 The rifle is provided with a firing-simulating mechanism without cartridges (dry releases). To imitate firing without cartridge detach the magazine from the rifle.

The rifle further servicing is just the same as during firing with live cartridges. After training in simulated firing without cartridges has been over it is necessary to attach the empty magazine to the rifle, reload the rifle and perform test release.

2.4.7 Safety engagement and disengagement (if available)

"Safe" position:

- move the safety towards the trigger as far as it will go.

"Fire" position:

- move the safety from the trigger till the stop.

3 MAINTENANCE

3.1 In-Service Maintenance

3.1.1 Field stripping

Carry out the rifle field stripping for its inspection, cleaning and lubrication after firing. Use the tools from the set of accessories, supplied with the rifle.

To field strip the rifle:

- press the magazine latch and detach the magazine;
- disengage the safety (if available);
- move the bolt to the rear position and check to make sure that the chamber is empty;
- loosen the clamp nuts and detach the sight;
- move the bolt to the rear and press the latch in the lever;
- remove pin from the receiver and extract the locking mechanism.

To re-assemble the rifle insert the locking mechanism into the receiver, match holes in the lever and receiver and insert the pin so that the latch in the lever enters the pin slot.

3.1.2 Detailed disassembly

The rifle detailed disassembly, including disassembly of the trigger mechanism, locking mechanism and sight should be performed only in case of utter necessity and in the specialized shop.

3.1.3 Cleaning and lubrication

Clean the rifle immediately after firing, and in cold weather clean the rifle in an hour after it has been brought indoors.

To clean the rifle, proceed as follows:

- perform field stripping;
- wash and scrub the barrel bore;
- clean slots in the barrel end for extractor and auxiliary extractor;
- remove grease, lead and brass residue from the barrel end and from receiver near the barrel and magazine well;
- remove powder fouling and dirt from the breeching face, bolt slots, extractor and auxiliary extractor.

In case of firing pin malfunction (sticking of firing pin inside the bore) knock out the firing-pin stud, remove the firing pin and clean the hole in the bolt for the firing pin using wiping cloth and kerosene, then wipe it dry.

If the rifle was exposed to rain or snow, disassemble it:

- remove the sight,
- withdraw the locking mechanism,
- detach the stock for which purpose loose connecting screws through one or one and half turn and then unscrew them completely.

Wipe the rifle using dry wiping cloth, wipe the sight thoroughly.

While attaching the receiver to the stock first screw in the rear connecting screw, providing tight fit of receiver to the stock, but not till the stop. Then screw in the front connecting screw in the same way. At last screw in both screws till the stop in the same order and unscrew them through 45° approximately to prevent the stock from deformation.

If it is impossible to start cleaning immediately, first wipe the rifle with dry and then with oiled wiping cloth, unscrew connecting screws through one turn and place the rifle in the cover.

Wash the barrel bore with rifle oil from the receiver side using the cleaning rod and bristle brush (three-five double travels of cleaning rod along the barrel entire length). The cleaning rod should be straight and the rod plating should be intact.

Clean the barrel bore from the receiver side by means of cleaning rod, pull-through and wiping cloth. The pull-through should be straight. Wind

wiping cloth round the pull-through so that the cleaning rod moves down the barrel bore with slight effort.

The wiping cloth should be soft, clean and oiled prior to its placing into the barrel bore. Change the wiping cloth until it bears traces of carbon deposit.

When the wiping cloth or pull-through is jammed in the barrel bore, do not drive them out by yourself to prevent the barrel bore from damage. Lubricate the barrel bore with rifle oil and take the rifle to a gunsmith for repair.

When extreme spread of impacts increases as a result of the rifle prolonged servicing clean the barrel bore with any cleaner, ensuring removal of fouling and lead and not causing corrosion.

After the rifle has been cleaned, lubricate it with a thin layer of oil in compliance with Table 3. The oil should correspond to a season of year.

Table 3

Lubrication point	Method of lubricant application
Barrel bore	Lubricate the barrel bore with bristle brush from the muzzle chamfer side, having preliminarily dipped it in the rifle oil (two-three double travels of cleaning rod along the barrel entire length).
Locking mechanism, sight screws	Wipe the parts with wiping cloth preliminarily dipped in rifle oil and wrung out.
Trigger mechanism	Drop rifle oil on parts' axes of rotation and contact points. Let the excess oil to trickle down and remove it shaking the trigger mechanism

To lubricate the cleaned barrel bore use a special bristle brush.

Keep brushes clean, regularly wash them in gasoline, as hard particles may be found in a dirty brush, and they may damage the barrel bore while cleaning and oiling. Never lubricate the magazines in the process of operation. The follower, magazine body should be dry inside and outside.

3.2 Maintenance during Long-Term Storage

3.2.1 To provide rifle serviceability, it should be always cleaned and lubricated with a thin layer of rifle oil.

Store the rifle in dry premises without sharp temperature fluctuations, far from heating devices. Aggressive impurities should be absent in environmental air. To prevent the mainspring from residual strain, the hammer should be uncocked.

3.2.2 While putting the rifle in a long-term storage thoroughly clean and oil it. The oil layer should be thick but there should be no drips on the components' surfaces.

3.2.3 After the long-term storage degrease the rifle prior to its servicing. Remove old grease and lubricate the rifle with a thin layer of rifle oil. Check its serviceability by several dry shots.

4 STORAGE

4.1 Store the rifle in dry premises without sharp temperature fluctuations far from heating devices and with no acid, alkaline and other aggressive impurities in environment air.

4.2 While storing the hammer should be uncocked to prevent the mainspring from residual strain.

5 TRANSPORTATION

5.1 The rifle may be transported by any type of transport in covered transport means.

5.2 The rifle should be transported unloaded in its cover. Protect the rifle against dirt and moisture affect as well as against impacts and drops.

APPENDIX A

List of Rifle Components

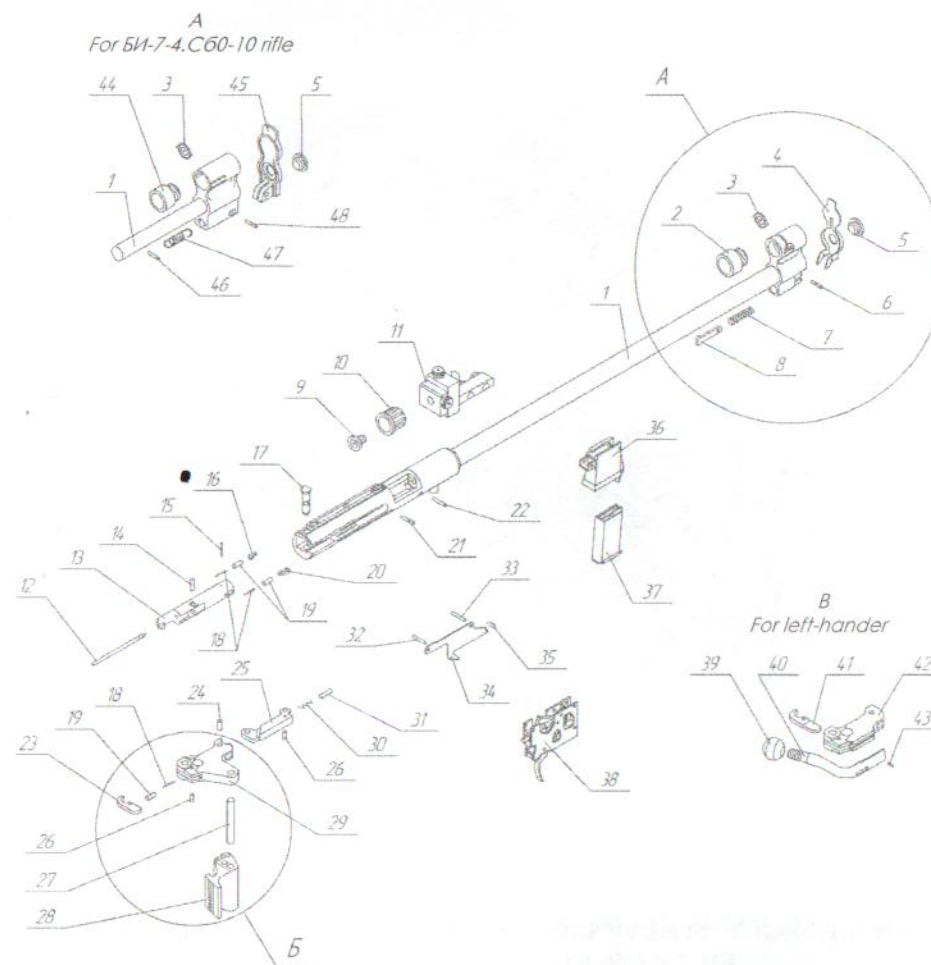


Figure A.1, Sheet 1 - Components of "Биатлон-7-3" and "Биатлон-7-4" rifles

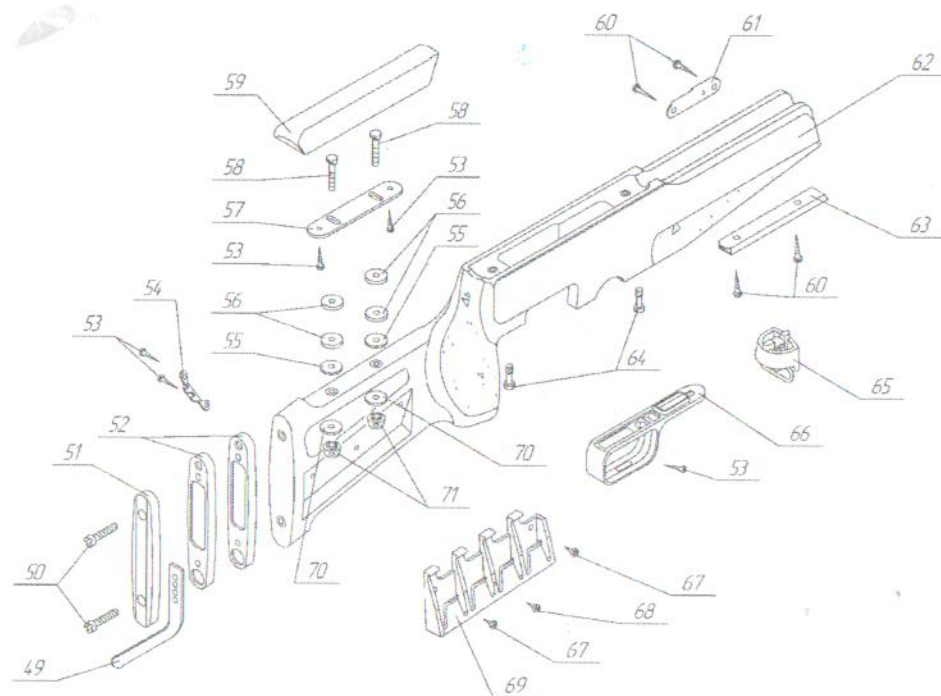


Figure A.1, Sheet 2 - Stock of "Биятлон-7-3" and "Биятлон-7-4" rifles, except of БИ-7-4.С60-08 and БИ-7-4.С60-10 versions

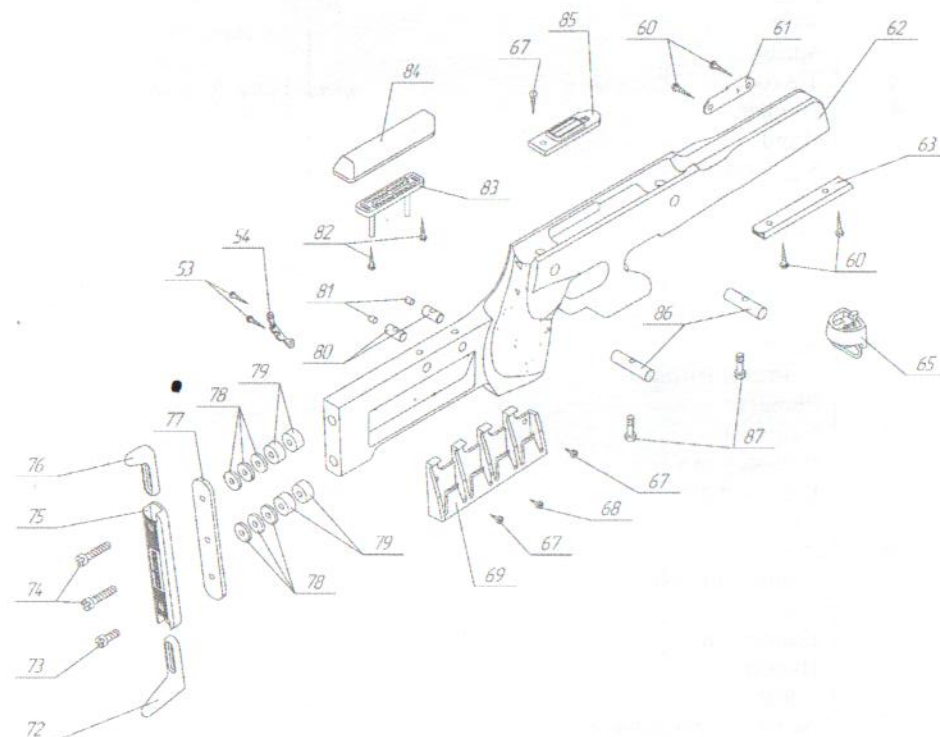


Figure A.1, Sheet 3 - Stock of БИ-7-4.С60-08 and БИ-7-4.С60-10 versions

Table A.1 List of “Биатлон-7-3” and “Биатлон-7-4” Rifles Components

Item No	Description	Note
1	Barrel with receiver	26 marking
2	Nut	
3	Circular front sight	
4	Cover	
5	Plug	
6	Axle	
7	Spring	
8	Tie rod	
9	Diopter	13 marking
10	Blind	
11	Sight assembly	
12	Firing pin	
13	Bolt	
14	Bolt pin	
15	Firing-pin stud	
16	Auxiliary extractor	
17	Axle	
18	Extractor spring	
19	Plunger	
20	Extractor	
21	Bolt-stop pin	
22	Bolt-stop pin	
23	Latch	
24	Pin	
25	Connecting rod	
26	Pin	
27	Handle pin	
28	Handle	
29	Lever	
30	Auxiliary-extractor spring	
31	Connecting-rod retainer	
32	Axle	
33	Pin	
34	Catcher	
35	Catcher spring	
36	Magazine casing assembly	
37	Magazine	
38	Trigger mechanism	
39	Knob	
40	Clip	
41	Latch	
42	Lever	
43	Pin	

Item No	Description	Note
44	Adapter	
45	Cover	
46	Pin	
47	Spring	
48	Pin	
49	Hook	
50	Connecting screw	
51	Butt plate	
52	Shim	
53	Swivel wood screw	
54	Swivel	
55	Set washer	
56	Set washer	
57	Plate	
58	Cheek piece screw	
59	Butt cheek piece	
60	Rosette wood screw	
61	Swivel base	
62	Stock	
63	Swivel plate	
64	Connecting screw	
65	Sling swivel	
66	Trigger guard	
67	Wood screw	
68	Wood screw	
69	Magazine holder	
70	Washer	
71	Clamp nut	
72	Hook	
73	Screw	
74	Connecting screw	
75	Butt plate	
76	Hook	
77	Support	
78	Washer	
79	Washer	
80	Bush	
81	Screw	
82	Wood screw	
83	Post	
84	Cheek peice	
85	Plate	
86	Bushing	
87	Connecting screw	

РЭ винтовки спортивной “Биатлон” на английском языке

427/154-15